



TYGER TUBE DOOR

TG-DR2J62868

BEFORE INSTALLATION

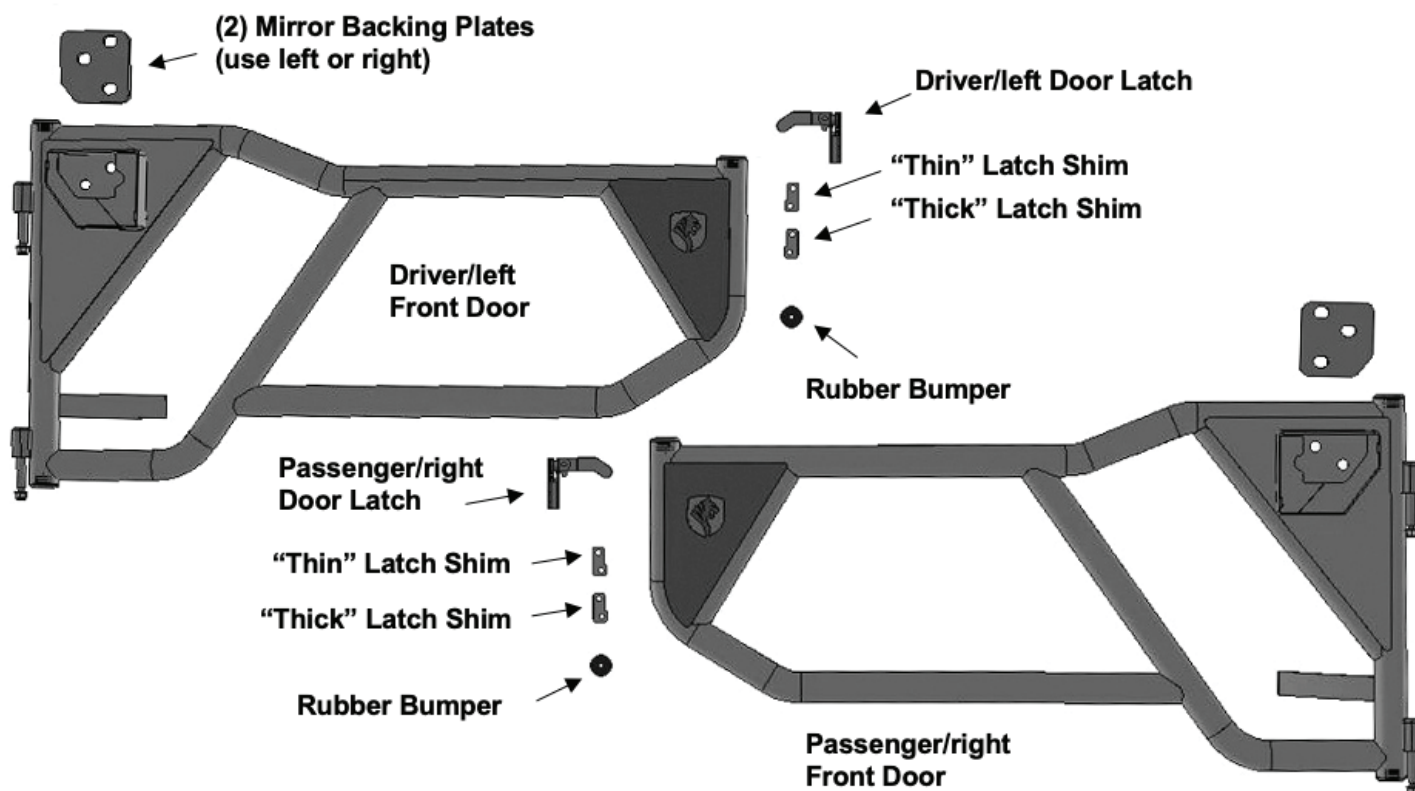
READ INSTRUCTIONS CAREFULLY BEFORE STARTING INSTALLATION. REMOVE CONTENTS FROM BOX AND VERIFY ALL PARTS ARE PRESENT. FAILURE TO IDENTIFY DAMAGE BEFORE INSTALLATION COULD LEAD TO A REJECTION OF ANY CLAIM. IF MISSING PARTS OR ANY DAMAGE FOUND, PLEASE TAKE A PICTURE FOR THE CLAIM PURPOSE. TO FILE YOUR CLAIM, PLEASE VISIT: WWW.TYGERAUTO.COM/CONTACT

TORQUE VALUES

Fastener Size	Class 8.8 Torque (ft-lbs)	Class 10.9 Torque (ft-lbs)
6mm	6-7	6-7
8mm	15-16	22-23
10mm	31-32	44-45
12mm	54-55	78-79
14mm	87-88	125-126

Parts List

- x1 Driver/left Front Door
- x1 Passenger/right Front Door
- x2 Mirror Backing Plates
- x1 Driver/left Latch Assembly
- x1 Passenger/right Latch Assembly
- x2 Thin Latch Spacers
- x2 Thick Latch Spacers
- x2 Rubber Door Stops
- x4 8mm x 16mm x 1.6mm Flat Washers
- x4 8mm Nylon Lock Nuts
- x4 6mm x 25mm Button Head Bolts
- x4 6mm x 12mm x 1.6mm Flat Washers
- x4 6mm Lock Washers
- x6 5mm x 18mm x 2mm Flat Washer
- x2 4mm x 20mm Button Head Bolts
- x1 4mm Wrench
- x1 2.5mm Wrench





TYGER[®]

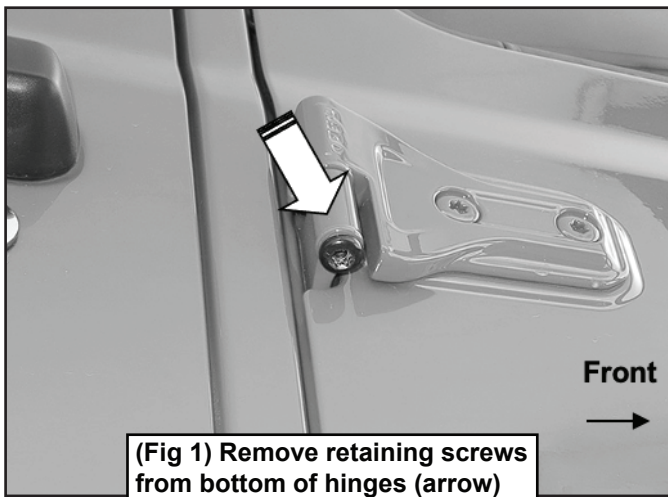
PROCEDURE:

REMOVE CONTENTS FROM BOX. VERIFY ALL PARTS ARE PRESENT. READ INSTRUCTIONS CAREFULLY BEFORE STARTING INSTALLATION. ASSISTANCE IS RECOMMENDED.

STEP 1

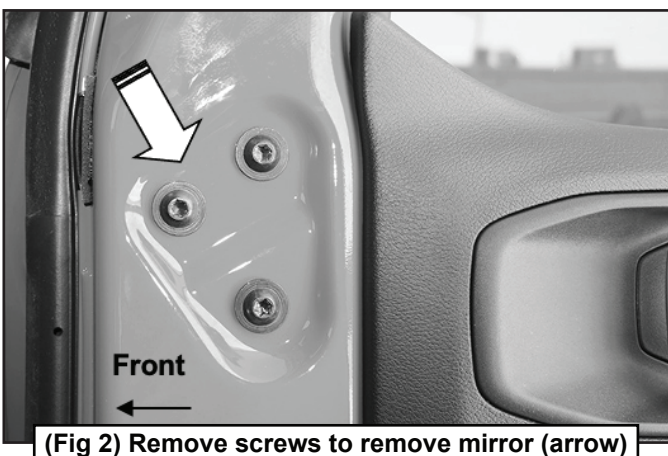
Start installation at the passenger/right front door. Roll window down fully into door. Remove the retaining screws from the bottom of the (2) outer door hinges (Fig 1).

Passenger/Right Side Installation Pictured



STEP 2

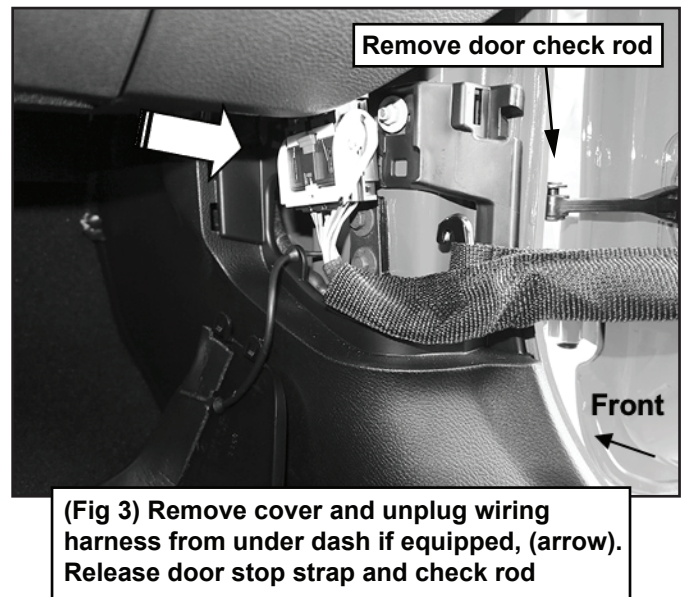
Open the door and remove the (3) bolts to remove the outer mirror assembly (Fig 2).



STEP 3

On models with power/heated mirrors, remove cover and unplug the wiring harness leading from the door to under the dash (Fig 3).

Passenger/Right Side Installation Pictured



STEP 4

Release the limit strap from the hook on the mounting bracket (Fig 3). Remove door check rod.

IMPORTANT: To prevent the door from swinging fully open and possible damage, have someone hold door in place after limit strap is removed.

STEP 5

Insert arm through open window, open door slightly and lift door straight up and out from hinges. Move door to a clean stable surface.

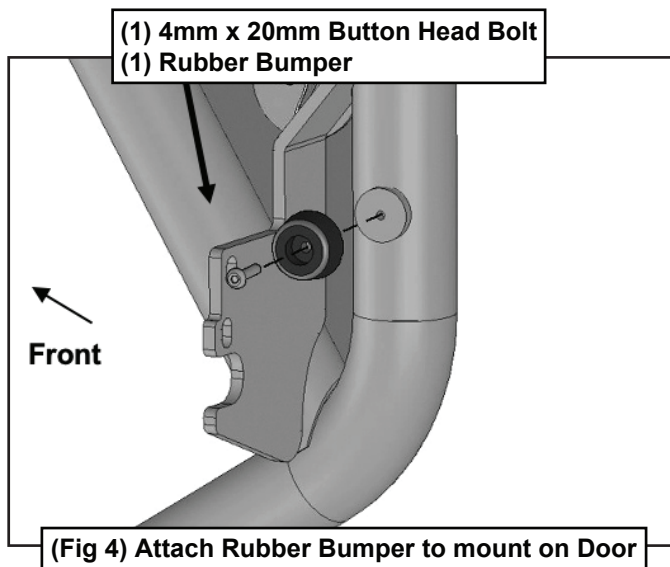


TYGER[®]

STEP 6

Carefully unwrap the passenger/right front Door Assembly. Select (1) Rubber Bumper. Attach the Bumper to the mounting pad on the inside of the door with (1) 4mm x 20mm Button Head Bolt (Fig 4). DO NOT overtighten Bolt or damage to Bumper could result.

Passenger/Right Side Installation Pictured

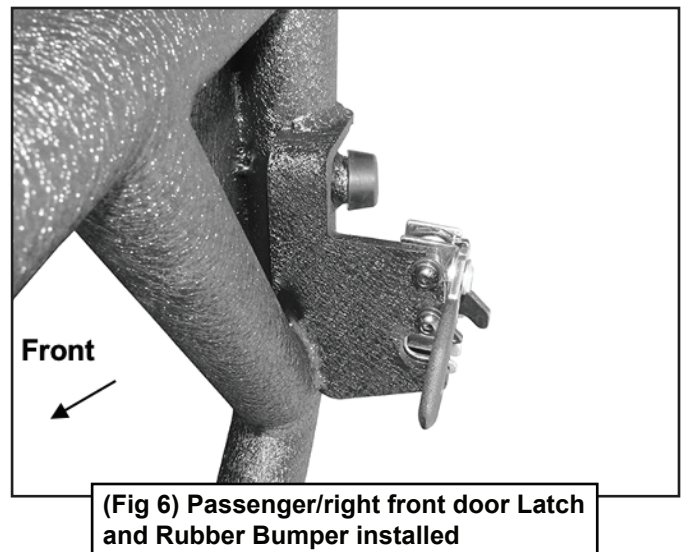
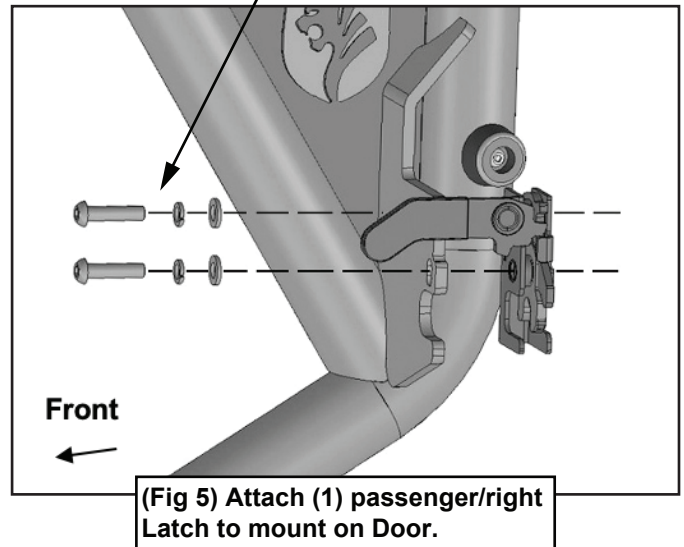


STEP 7

Select (1) Passenger/Right Latch Assembly (Fig 5). Attach the Latch to the back of the mounting tab on the door with (2) 6mm x 25mm Button Head Bolts, (2) 6mm Lock Washers and (2) 6mm Flat Washers (Figs 5 & 6). DO NOT tighten hardware.

Passenger/Right Side Installation Pictured

(2) 6mm x 25mm Button Head Bolts
(2) 6mm Lock Washers
(2) 6mm Flat Washers

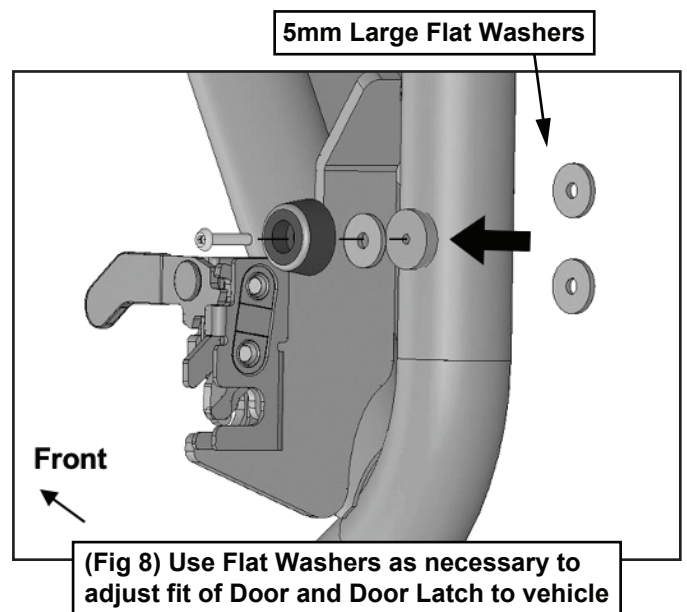
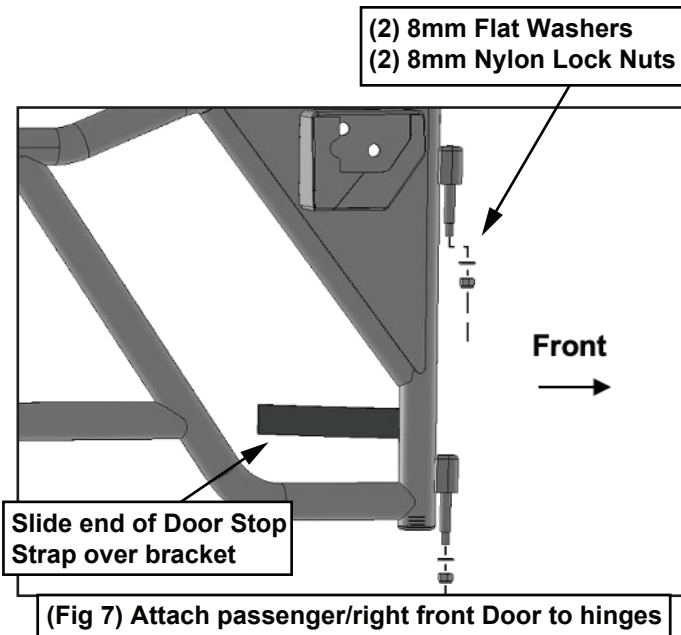


STEP 8

Apply a very thin coating of waterproof grease, (not included), to the Hinge Pins on Door. Carefully hold the Door in place over the hinges on the vehicle. Guide the Hinge Pins down and into the hinges. Secure each Hinge Pin to the hinge with (1) 8mm Flat Washer and (1) 8mm Nylon Lock Nut (Fig 7). Leave Lock Nut loose at this time.



TYGER®



STEP 9

Attach the Door Limit Strap to the bracket on the vehicle (Fig 7).

STEP 10

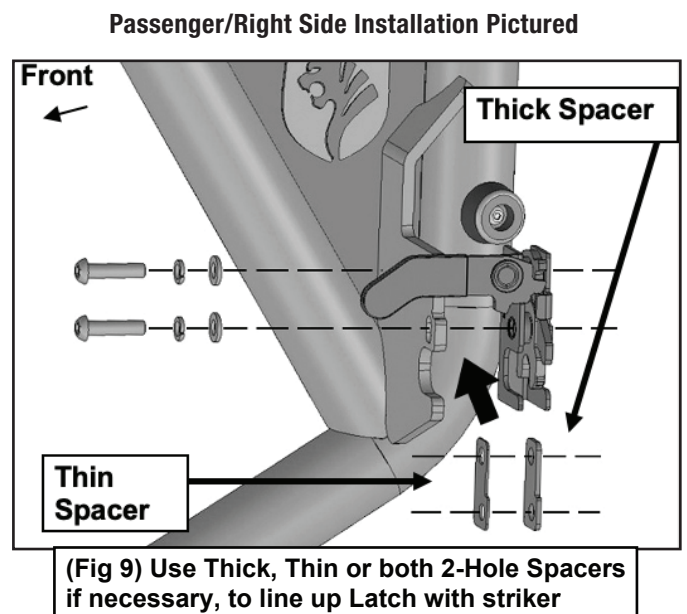
Slowly swing the Door open and close a few times to spread grease through hinge. Wipe off any excess grease immediately.

STEP 11

Use the included 5mm Large Flat Washers as adjustment shims to tighten up the Door against the striker as needed (Fig 8). Insert the Washers between the Rubber Bumper and the mount on the Door. Once Door is fully adjusted, tighten the bottom 8mm Lock Nuts on the Hinges until there is **slight resistance** in the door operation. DO NOT fully tighten Lock Nuts.

STEP 12

Check the door Latch alignment to the door striker loop on the body. Use the included Thick or Thin 2-hole Spacers to line up the latch with the center of the striker (Fig 9). Insert the Spacers between the Latch and the mounting plate on the Door as needed (Fig 9). Adjust the position of the Latch up or down to properly line up with the striker. Once adjusted, fully tighten hardware.

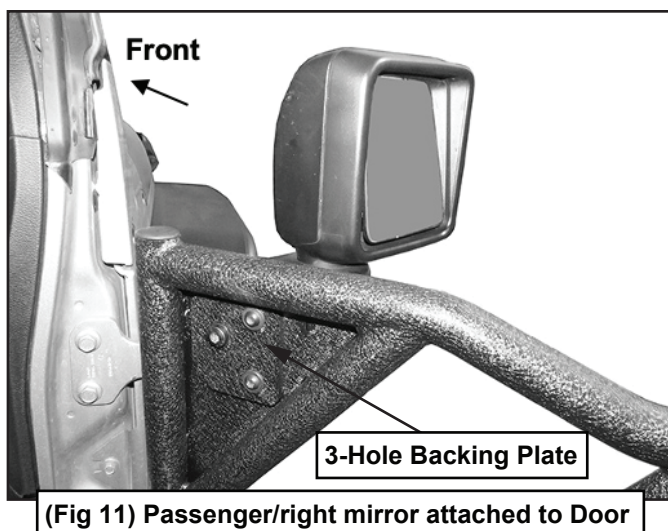
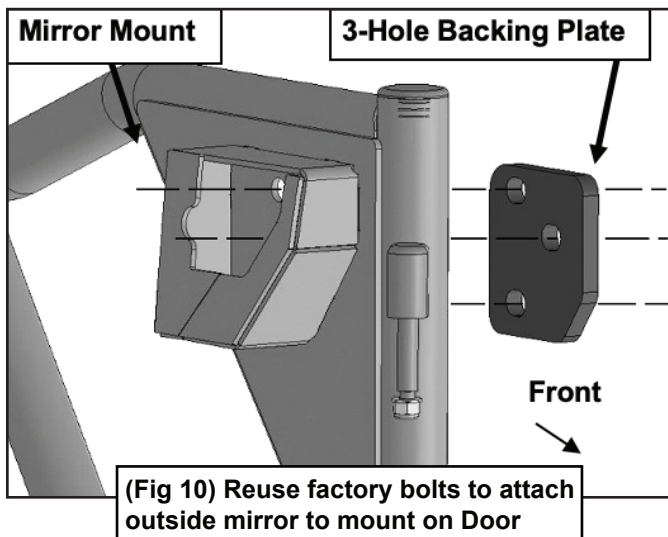




STEP 13

Select (1) 3-Hole Backing Plate (Fig 10). From the back of the Door, insert the factory bolts through the Backing Plate and the Door. Slide the mirror over the mount on the door and thread the bolts into the mirror (Fig 11).

Passenger/Right Side Installation Pictured



STEP 14

Open and close the Door and Latch assembly, adjust as needed and fully tighten all hardware.

STEP 15

Move to the passenger/right rear Door. Repeat **STEPS 1-14** to install the front Door.

STEP 16

Do periodic inspections to the installation to make sure that all hardware is secure and tight. Periodically apply grease to hinge pins.